

PASSPOINT™

ACCESS CONTROL • SMART • SIMPLE • SECURE

SMART,
SIMPLE,
SECURE
ACCESS
CONTROL
SYSTEMS
FROM THE
INDUSTRY
LEADER

VIRTUAL BOUNDARIES AND PHYSICAL LIMITS... REAL ACCESS CONTROL

PATHWAYS AND PASSAGES... FROM POINT TO POINT...

Connectivity is key. *PassPoint* utilizes the unique power and performance of LonWorks® networking technology. Easily expandable, the *PassPoint* Access Control System readily adapts to the changing needs of its host business. From *Northern Computers, Inc.* – the industry leader in access control – comes a new access control system. *PassPoint. Smart. Simple. Secure.*

IT'S ALL ABOUT MOVEMENT... FROM POINT TO POINT...

From one point of access to 32 – *PassPoint* goes the limit. Designed for simplicity of installation and operation, systems are pre-configured, and interface with compatible VISTA intrusion systems*. Rich software features enhance and support a full range of on-line and off-line functions.

OUT
OF THE
BOX
AND ON
TO THE
WALL

PassPoint. Make Your Move.

LonWorks is a trademark of Echelon Corporation registered in the United States and other countries.

PassPoint is a trademark of Pitway Corp.

*Available Spring 1999

**NORTHERN
COMPUTERS, INC.**

PASSPOINT ACCESS STARTER KIT (ASK)

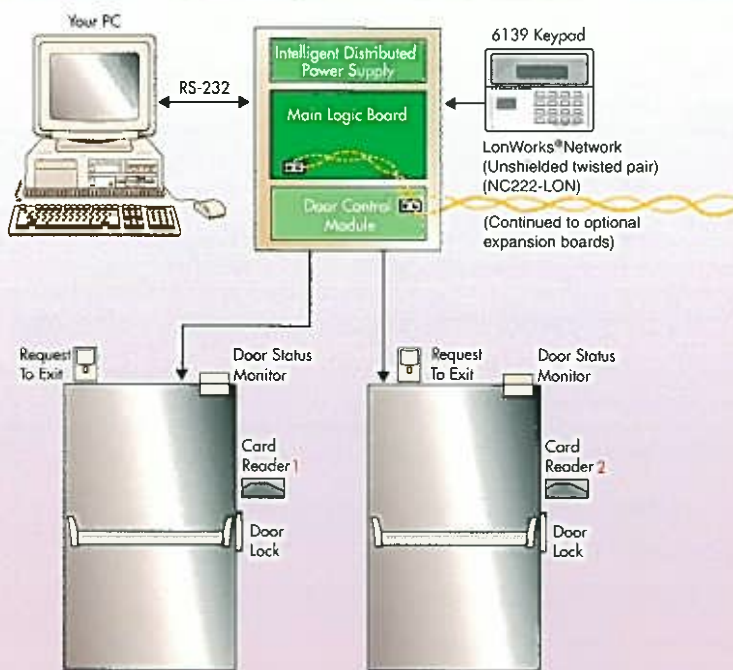
Your starter kit contains the equipment you'll need to install and operate a one or two-door PassPoint Access Control System. When it comes to reader technologies, PassPoint uses convenient proximity card readers and you have the option of purchasing additional sets of pre-encoded cards at any time.

Installation and set-up is quick and easy with PassPoint "Express" Windows-based Software. Follow the Quick-Start Guide to a successful installation of a two-reader access control system.

When you're ready to expand your system — our Door Expansion Kit (DEK) is all you'll need!

Access Starter Kit (ASK) Contains:

- 1 System Enclosure - including cam-lock
- 1 Intelligent Distributed Power Supply
- 1 Main Logic Board (MLB)
- 1 Door Control Module (DCM)
- 1 Wall Transformer - 18VAC - 50 VA
- 1 ADEMCO 6139 Keypad/Display
- 2 Proximity Card Readers
- 50 Proximity Cards
- 1 RS-232 Cable for PC Connection (6 ft)
- 1 PassPoint "Express" Windows-based Software Package
- 1 PassPoint System Quick-Start Guide



ACCESS STARTER KIT (ASK)

To complete the installation for ASK and DEK, you will need:

Cards and Card Readers (for DEK only) ▲ One or two readers and additional cards - see *How to Order* table

Door Locks ▲ Magnetic Lock or Electric Strike - ML8011LC-US28 or NS112S-S

Cables ▲ For Power: 10 feet of 2-conductor 18AWG wire
 ▲ For Card Readers: 5-conductor 18AWG Stranded Shielded wire - NC1861-BL
 ▲ For Door Locks: 2-conductor 18AWG wire suggested - NC1821-OR
 ▲ For LonWorks Network - 22AWG unshielded twisted pair - NC222-LON

Battery ▲ 7AH - PTBAT

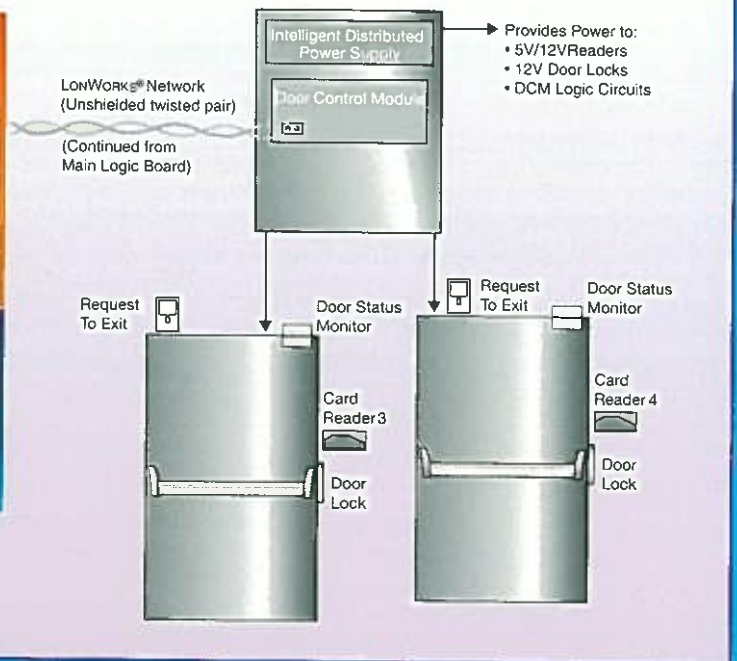
Other Optional Materials: ▲ Door Contacts
 ▲ Request To Exit Device

* Windows is a registered trademark of Microsoft Corporation



PASSPOINT DOOR EXPANSION KIT (DEK)

Your expansion kit includes materials you'll need to expand your existing PassPoint Access Control System. Each single kit provides the basic equipment for an additional one or two-door installation.



DOOR EXPANSION KIT (DEK)

Door Expansion Kit (DEK) Contains:

- 1 System Enclosure - including cam-lock
- 1 Intelligent Distributed Power Supply
- 1 Door Control Module (DCM)
- 1 Wall Transformer - 18VAC - 50 VA



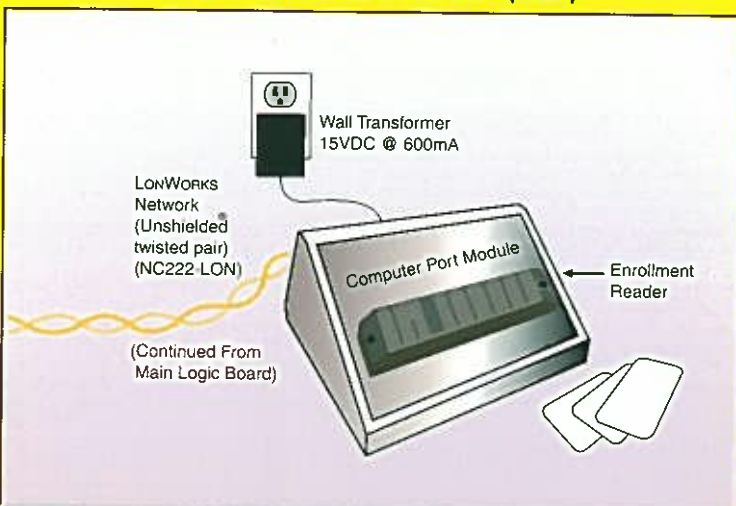
CARD ENROLLMENT KIT (CEK)

PASSPOINT CARD ENROLLMENT KIT (CEK)

The enrollment kit has everything you'll need to equip your PassPoint Access Control System with card enrollment capabilities. This kit is a unique feature of PassPoint systems and allows batch enrollment of cards.

Card Enrollment Kit (CEK) Contains:

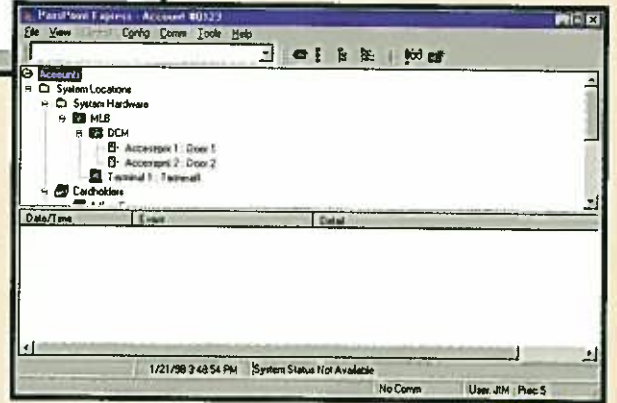
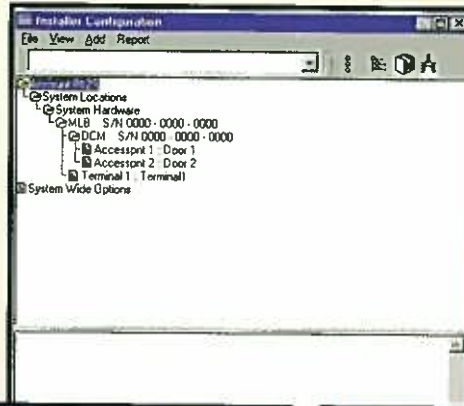
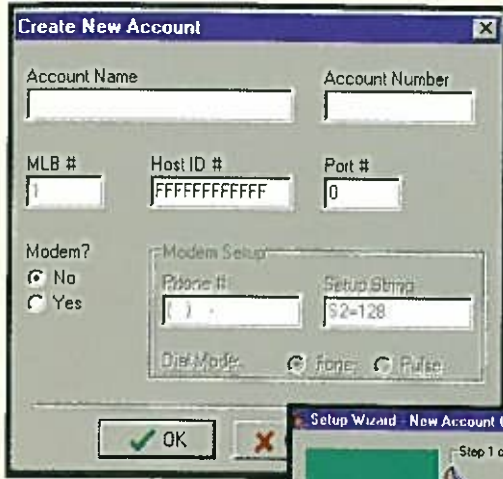
- 1 Card Enrollment Cabinet
- 1 Wall Transformer - 15VDC @ 600 mA



To complete the installation, you will need:

Cable

- ▲ For LonWorks Network - 22AWG unshielded twisted pair wire
NCI Part # - NC222-LON



PASSPOINT SOFTWARE

The PassPoint Access Control System may be operated either on-line or off-line – depending on the preference of the user and the size of installation. Once the system has been configured using a PC, PassPoint is fully operational in the off-line mode. The system need only be brought on-line for subsequent card enrollments or time schedule adjustments.

Off-line Operation

For low event-transactions or small installations where daily cardholder database maintenance is not required, the off-line operations mode may be ideal and extremely cost-effective. Each Access Starter Kit comes complete with PassPoint's "Express" Windows '95-based Software, which allows the system administrator to configure hardware, add/delete cardholders, upload system events and generate customized reporting – all with comprehensive, context-sensitive help and easy to use configuration Wizards.

On-line Operation

For more demanding access control system installations, a dedicated PC may be used. In this scenario, the PC continuously runs the "Express" Software, and provides visual monitoring of system activities.

The PassPoint Windows Software is a fresh interpretation on a classic graphical presentation. PassPoint Windows allows the system administrator to configure, monitor, control and report on all activities and resources in the system.

Features & Functions:

- ▲ 32 Bit software compatible with Windows 95, 98 and Windows NT 4.0
- ▲ Configuration "Wizards" for simple, out-of-the-box installation
- ▲ Graphical presentation of system architecture
- ▲ Control over all system resources by point and click functionality
- ▲ Full, custom reporting suite
- ▲ Real time monitoring of events

Minimum System Requirements

Requirements	
IBM Compatible PC	Intel Pentium Processor; 90MHz or faster
Operating System	Windows 95, 98 and Windows NT 4.0
Memory	16 MB
Disk Space	20 MB Hard Drive space available

Listings and Approvals:

Passpoint Systems are listed by Underwriters Laboratories (UL) under UL294 for Access Control Systems.

PASSPOINT

ACCESS CONTROL · SMART · SIMPLE · SECURE

System Features

FEATURE	CAPACITY	DESCRIPTION
Cardholders	2000	A person who can be granted access through various points in a facility due to what they possess (a card), what they know (a Pin number), or what they are (a fingerprint scan).
Events	7000	Some occurrence within the system caused by either physical or timetable generated activity.
Access Points	32	Access Points may have a reader on both sides of a door to maintain the whereabouts of cardholders, or they may have a reader on only one side with an optional Request To Exit device on the other.
Unique Card Formats	Up to 32	Card formats can be defined by actual bit-images of the badges being enrolled.
Unique Facility Codes	8	The system can use up to eight individual facility codes per site.
Remote Dial-Up Sites	16	Establishment of a connection to a remote site via dial-up modems.
Command Station and/or Enrollment Readers	Basic: 12 Expanded: 32	A reader connected to the LonWorks network through a Computer Port Module for the purpose of controlling devices other than door locks, and/or enrolling new cards into the system.
Relay Outputs	33	An electro-mechanical device providing a form C output that can be used to control external electrical/electronic equipment.
Trigger Outputs	32	A solid-state digital switch that can be used to send low-level electronic signals to an external device as a result of an event in the PassPoint System.
Alarm Zone Inputs	66	An electronic circuit capable of monitoring the security status of a facility through the connection of sensing devices.
Time Schedules	64	Each day may have up to eight start/stop intervals, called day templates. There are up to 20 user-defined day templates, plus always and never, for a maximum of 22 day templates. Each of these day templates can be assigned to one of eight days of a schedule, and a maximum of 64 schedules can be defined within a system.
Computer Ports	2	For terminal or printer connections.
Holidays	32	These are days of the week which depart from the normal schedule.
Access Groups (up to 5 access groups per card holder)	128	Access Groups hold the details of which time schedules and through which access points individuals may pass if they are a member of the group.
System Administrators	21	These are a select group of people that have the responsibility of configuring and operating the PassPoint System, and reporting the data.

How To Order PassPoint Products

To get started, order the Access Starter Kit (PTASKPROX). Then, you can increase the number of doors on the system by ordering Door Expansion Kits (PTDEK) and additional readers and cards.

SYSTEM KITS	
Part Number	Item
PTASKPROX	Access Starter Kit with two Prox Readers, 50 Cards and Software
PTDEK	Door Expansion Kit - DCM, Can, Power, cables, no readers and cards
PTCEKPROX	Card Enrollment Kit with CPM, Prox Reader, Transformer and case
PTCANPOWER	ADEMCO Can + SmartPSU, Transformer
PTCPM	Computer Port Module

*Note: Access Starter Kit is also available without readers and cards. See "System Modules" for more information.

SYSTEM MODULES	
Part Number	Item
PTDCM	Door Control Module Only
PTQRM	Quad Relay Module Only
PTZIM	Zone Input Module Only
PTVGM	VISTA Gateway Module
PTDPSU	Distributed PSU Board for System/Strikes
PTTRAN	120v/60Hz Plug In Class 2 Transformer, 18VAC, 50VA
PTTRANCPM	120v/60Hz Plug In Class 2 Transformer, 15VDC, 600mA

READERS AND CARDS	
Part Number	Item
PTPROX	Proximity Reader
PTPROX25	Package 25 Prox Cards - Encoded

SOFTWARE	
Part Number	Item
PTACSWIN11	Software Disks/License/PassPoint "Express" Basic

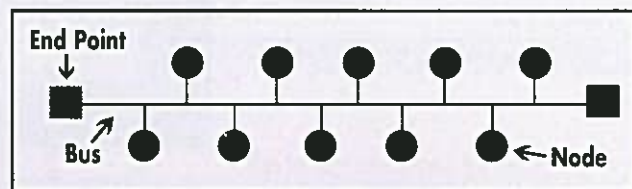
Networking with LonWorks

Echelon's patented LonWorks networking technology is the key to PassPoint's connectivity. With a speed of 78 Kbps, LonWorks gives PassPoint the capacity to expand with ease and the power to outperform its competition. In fact, 1500 ft. of unshielded, twisted pair cabling takes you anywhere and everywhere you need to go – there are no rules. Designed to accommodate long wire runs, LonWorks' polarity-insensitive networking technology supports a fully open topology.

Easy Connectivity

Simplicity of installation with LonWorks network wiring conventions:

- ▲ Free topology wiring up to 1500 ft
- ▲ Up to 8000 ft using Bus configuration
- ▲ 16 AWG wiring
- ▲ Fast 78Kbps data network speed
- ▲ PassPoint Nodes all have Echelon chips
- ▲ Fast on-site hook-up and testing
- ▲ No special training required



LonWorks Bus Wiring

- ▲ Go up to 8000 ft using a Bus configuration
- ▲ Use with dual end points

Use 22AWG polarity-insensitive, unshielded, twisted pair wiring

LonWorks Free Wiring

- ▲ Free topology wiring up to 1500 ft
- ▲ Use in any mode configuration, but with one end point

Use 22AWG polarity-insensitive, unshielded, twisted pair wiring - (NC222-LON)

